



WELCOME TO COTTAGE DE VINCK



Spacious guesthouse

up to 18 people ★★★★★

- ✓ Private parking
- ✓ Free WIFI everywhere
- ✓ Bicycle parking
- ✓ Adapted for wheelchair users
- ✓ Heated outdoor pool
- ✓ Playground equipment in the garden & furniture

In this overview, you can find a lot of useful and practical information about your stay.

Myself, Ilse and Niek started this guesthouse in August 2016. After a year of a lot of work, sweat and dust, we turned a rural two-dwelling house into this residence. We are proud of it, and hope people will have lots of fun and beautiful moments there.

More than 60 reviews via Google:

"An unforgettable weekend! We could not have made a better choice: a spacious guesthouse, where really everything is available."

"Young and old alike immediately felt at home there."

"Clean, beautiful, tidy and very quietly located. Definitely recommended."

Contact

info@cottagedevinck.be

057 46 84 46

0474 77 19 52

→ Please feel free to refer to **the map of the guesthouse (see Appendix 1)** to get a good orientation while reading this overview.

Bedrooms - All beds are made on arrival.

ground floor

Bedroom 1: double bed

Bedroom 2: double bed

Bedroom 3: double bed

ensuite bathroom with shower, double washbasin and toilet

= wheelchair-accessible bathroom

Bedroom 4: 2 single beds, which you can slide next to each other

Bedroom 5: bunk bed (2 pers.)

2 additional bathrooms with shower and double washbasin

2 separate toilets in the corridor (+ washbasin and hand soap)

TOTAL: 10 people sleeping on the ground floor

1st floor

Bedroom 6: master bedroom with double bed (XL), sitting area, desk and television

ensuite bathroom with double washbasin and toilet (+ hairdryer)

Bedroom 7: 2 single beds, which you can slide next to each other

Bedroom 8: 2 single beds, which you can slide next to each other

Bedroom 9: double bed

ensuite bathroom with shower and washbasin

1 additional bathroom with shower and washbasin

1 separate toilet in the hallway

TOTAL: 8 people sleeping on the 1st floor

Each **bathroom** has a shower + (double) washbasin (+ toilet). A set of **bath towels** is provided for each person. Each bedroom is equipped with **a wardrobe with some coat racks**. In addition, there are extra handy hooks or storage facilities in several places. Each window has indoor blinds, which sufficiently darken the room. A baby bath and potty are provided **for toddlers**.

There is also one travel cot with accompanying duvet, sheet and sleeping bag. A changing pad is not provided.

Garden (± 0.5 ha) with wonderful views and various spots to discover or enjoy. Large **terrace** with picnic benches and deckchairs, equipped with a sunshade. Delimited **pond** with wooden landing stage. **Sandpit** with accompanying toys. **Campfire pit** (wood included). **Play area** with swing, slide and football goal. **Play barn** for young and old (darts, baking table, table tennis and shuffleboard). **Pétanque** court (balls included). Garage with **BBQ** (excl. coal) equipped with 2 grills (70 cm), and **(outdoor) toys** (footballs, bicycles, skateboard, go-carts). Also available are badminton rackets with feathers.

The **swimming pool** (4m x 10m) is heated (from early April- to late September), weather permitting. **Beach towels** are available **for rent** to use during and after swimming. Please let us know in advance if you wish to hire beach towels. There is also a drying rack to dry them outside.

Ample parking in front (< 6 cars) and next to the guesthouse (< 10 cars), accessible via a private road. There are also **2 charging stations** provided for electric or hybrid cars. During the day this is free due to our own green electricity. At night, this is charged at current network rates.

The **kitchen** is fully equipped with pots, pans and cutlery. All kinds of household appliances such as gas cooker + electric oven + microwave oven (2) + fridge (XL) + freezer + coffee maker (incl. filters- without coffee powder) + dishwasher + blender + toaster are present. For fire safety reasons, there is no deep fryer or the like.

→ Refer to the **comprehensive kitchen inventory for more info (see annex 2)**.

There is a **basic package** for several days (= sponge + washing-up liquid + kitchen rags + towels + dishwasher tablets + hand soap + rubbish bags + cling film + aluminium foil). There is also sufficient **cleaning equipment** (= hoover + sweeping brushes + dustpan and brush + squeegee + mop + buckets + cleaning product). Also a supply of toilet paper. We ask that you leave the house **swept clean**. Cleaning service is included after departure.

The **relaxation area** has a spacious seating area with **smart TV** (HDMI connection with cable), DVD player, radio and music system. **Free WIFI** access throughout the house (code: devinck8902). There are a few **books and comics** for children. There is also a cupboard with

tourist information about the region, with various walking and cycling maps (via junctions). The guesthouse is right on the 'Westhoek' Tourist Office's walking and cycling network.

The **living space** has a long table that 18 people can slide their feet under. This also includes a bar counter with bar stools and small seating area. The available sideboard is extensively stocked with plates, bowls, bags and different types of glasses.

→ Refer to the **sideboard inventory** for more info ([see annex 2](#)).

For the little ones, there are 2 'tripods' (without braces), 1 high chair (with braces) and 1 high chair (with table and braces).

The property has been inspected according to the latest **fire safety** measures. There are smoke detectors, emergency exits and fire extinguishers.

We highly value **sustainability**. We treat our own wastewater with a 'bio bed' water treatment plant on the estate. Electricity is also 100% green thanks to solar panels and a home battery.

The house is also fully corona proof according to Tourism Flanders measures, **ventilation** is adapted and hand gels are available. Everything is thoroughly disinfected between guests. For these reasons, please **do not arrive earlier than 5pm**. We really need all the time we can get between the different guests. Please **leave no later than 10am (Monday- Friday) and 9pm (Sunday)**.

The price includes **everything** (made beds for 18 people, set of bath towels per person, kitchen linen, consumption, tourist tax, and normal final cleaning). After full payment, you will receive an **access code** via e-mail. The deposit will be returned to your account one week after your stay, if everything is in order.

Cottage de Vinck is located along a beautiful lane 600 metres from the public road, in the middle of the historic WWI site of Bellewaerde. Baron de Vinck of the castle estate near Hooge had a rural cottage there that the British christened "Wee Cottage" on their trench maps. More than 100 years later, the rebuilt country house is an oasis of calm in the middle of a green and wooded area that invites hiking, cycling and even horse riding.

→ Want to book a private guide for a cycling or walking tour about the rich history of the region? Be sure to check out **Bellewaerts'** website: www.bellewaerts.be

TIP: Cycle network "Ypres Salient"- passage at the guesthouse (node 56)

→ There is a **nice walk** that starts at the guesthouse (**see Annex 3**).

TIP: Ypres Arch Walking Network- passage at the guesthouse (node 73)

→ **More tourism tips** at www.toerismeieper.be or www.toerismewesthoek.be

→ Info and various brochures available at the Cottage de Vinck.

→ **Public transport to Ypres:** bus line 84 stops every hour at the 'Bellewaerde' stop 300m from the guesthouse.

We ourselves own **Hooge Crater museum**, at the beginning of the cul-de-sac that goes up to "Cottage de Vinck".

You can visit this unique private museum about the 1st world war **at a group rate** as tenants of this guesthouse.

The museum is located at the beginning of Bellewaardestraat, in the old Hooge church, and right opposite Hooge Crater Cemetery, which with its 6,000 graves is the 4^e largest in Europe. The war museum houses the collection of owner Niek Benoot and of Philippe Oosterlinck, a passionate collector of WWI war material. Besides the realistic reconstructions of war scenes, the collection of weapons, uniforms and historical photographs stand out. A must for the interested tourist, and for those looking for a historical perspective.

Are you visiting with the (grand)children? Children go on an independent tour of the museum with the Hooge Boys' family trail.



Using a fill-in sheet and a floor plan, they pass through various places in the museum, where- via videos by the Hooge Boys- they discover knew-you-things about World War I and are given assignments. The information boards are at children's height and contain simple words. It is an interactive and playful trail with fun assignments. A museum visit on a child's scale!

→ Visit Hooge Crater museum: www.hoogecrater.com

Theme café

Housed in the old Hooge school, this cosy theme café is located next to the museum. You can marvel at Belgium's largest collection of 'TRENCH ART' (trench art).

Definitely not to be missed is the extensive menu of delicious WESTHOEK beers. You could, for example, try the 'Wipers Times' on tap. A delicious blonde beer from the last and only Ypres city brewery. Also available are delicious croques, salads and breughel plates to satisfy hungry stomachs.

→ The theme café is also an info point, where you can ask all your questions about tourism, hiking and cycling ...

→ Open every day from 10am to 6pm, and on Sundays from 10am to 9pm.

Closed on Mondays and Tuesdays. www.hoogecrater.com/thema-cafe

See you at 't Hooge!!!

Fun for big and small can be found with our neighbours.

→ Bellewaerde park: www.bellewaerde.be

→ Bellewaerde aqua park: www.bellewaerde.be/aquapark

Breakfast

→ A bakery that delivers to your home (at the desired hour) and where you can order online:
www.bakkerijcocerulle.be (+ €2.50 per delivery)

→ Another good bakery offering home delivery (from €35): www.versavelieper.be

Lunch- dinner

→ Tapas boards, full breakfasts, buffets?

Contact **Guillaume from Beaufort Catering**: www.beaufortcatering.be

→ Indulge in tasty meals and/or a full breakfast delivered to your home?

Then contact **Traiteur Bruno**: www.traiteurbruno.be

→ Tasty BBQ with a chef at home?

Then contact **Patrick Noppe**: www.bbq-patrick.be

→ Fries delivered to your home?

Then contact **Tiepers frietje**: www.tiepersfrietje.be

Be sure to check and follow our facebook page for more news, photos and cool posts.

Thanks for visiting and sharing our facebook page!



Comments from our customers, and any improvements we would love to hear! You can always email these after your stay to info@cottagedevinck.be, or you can come visit us in person at Hooze Crater museum, at the beginning of the road. It is always nice to read a review from you on our facebook page, or give your stars on our Google page.

If you have any questions, problems, or comments, we are ready to help you. We are sure you will have a great stay. Therefore, a final but important tip: **enjoy the Westhoek and each other!**

Many greetings,

Ilse & Niek

Louis & Arthur

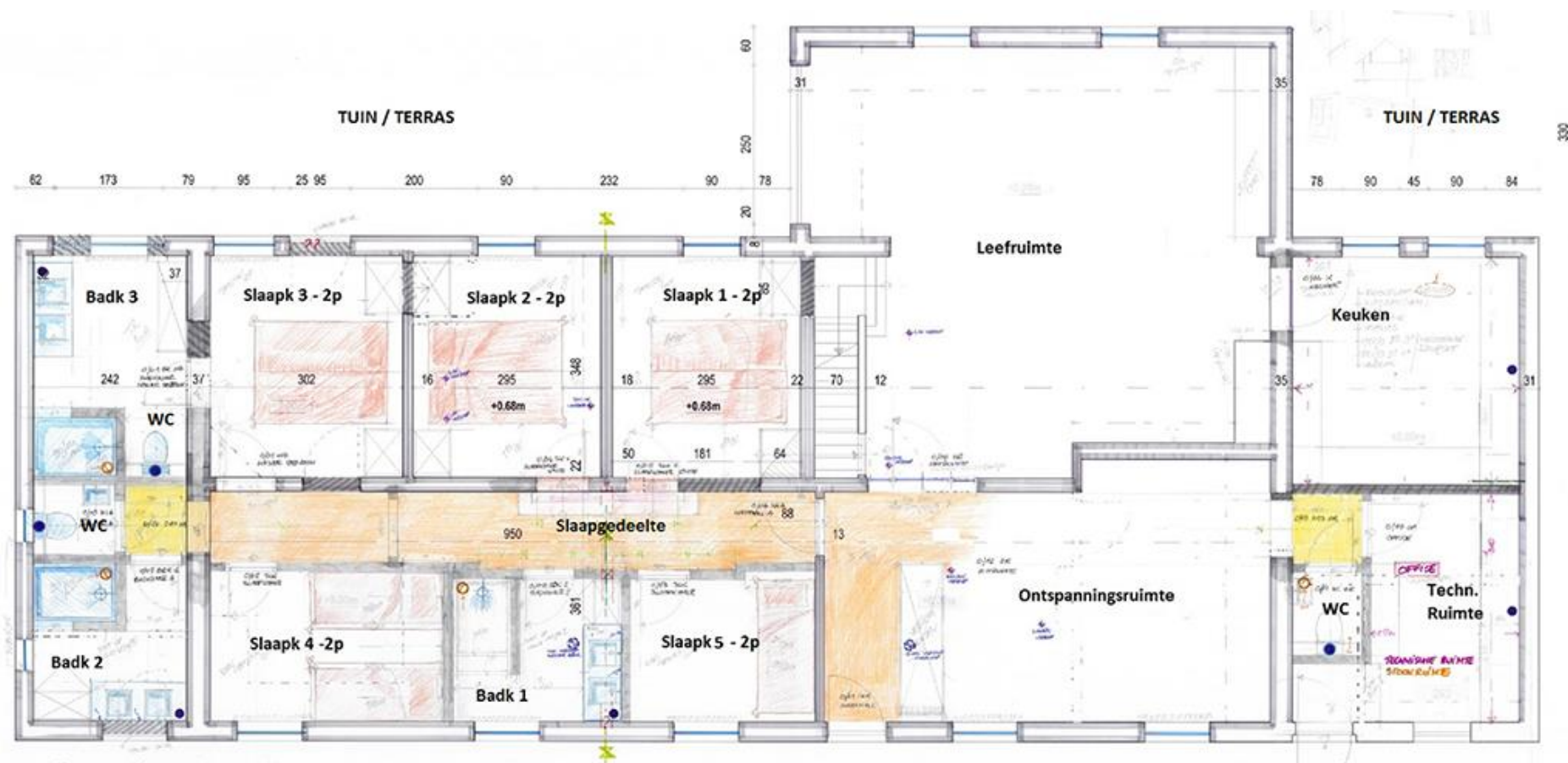






Annex 1

Ground floor



Hand-drawn architectural floor plan of the upper floor (BOVENVERDIEPING) of a house. The plan shows six bedrooms (Slaapk 6-2p, 7-2p, 8-2p, 9-2p, 10-2p, 11-2p) and six bathrooms (Badk 4, 5, 6, 7, 8, 9). It also includes a technical room (Techn. ruimte), a central hallway, and a staircase. Dimensions are marked in yellow and green, and room numbers are in black. The plan is drawn on a grid with various annotations and color-coded areas.

Annex 2

- ✓ square meat board
- ✓ colander (aluminium)
- ✓ large cooking pots with lids
- ✓ small cooking pots with lids
- ✓ saucepan with lid
- ✓ cutting boards (various sizes)
- ✓ potholders
- ✓ funnel
- ✓ enough cutters
- ✓ meat fork
- ✓ peeler
- ✓ gas hob lighter
- ✓ enough frying pans (different sizes)
- ✓ gripping pliers
- ✓ grater (aluminium)
- ✓ spatulas
- ✓ scissors
- ✓ ladles
- ✓ stampers
- ✓ creators
- ✓ beaters
- ✓ potluck
- ✓ ice scoop
- ✓ wooden spoons
- ✓ corkscrews
- ✓ can openers
- ✓ garlic press
- ✓ oven dishes
- ✓ fruit press
- ✓ kettle
- ✓ mixer
- ✓ all kinds and sufficient cutlery
- ✓ children's plastic cutlery (spoons, forks and knives)
- ✓ plastic children's crockery (plates, pots and cups)
- ✓ oyster knife
- ✓ coffee
- ✓ thermos jugs
- ✓ toaster
- ✓ sufficient beer glasses (different sizes)
- ✓ sufficient champagne and wine glasses
- ✓ sufficient water glasses
- ✓ coffee bags with bottom plates
- ✓ sufficient plates (small- large- deep)
- ✓ enough bowls
- ✓ egg cups
- ✓ salad bowls (various sizes)
- ✓ teapots
- ✓ glass jugs



Frontwandeling op de Ieperboog in Zillebeke

De Ieperboog moest koste wat kost verdedigd worden. Hier en daar konden de Duitsers wel degelijk stukjes van de heuvelkam innemen, zoals aan Bellewaarde Ridge. Vandaag verkennen we een deeltje van het front waar vier jaar lang een zinloze oorlog werd uitgevochten. We stappen door dichte bossen, langs prachtige panoramapunten en bezoeken het warmste museum van het land.

TEKST **MARIJN FOLLEBOUT**

Hoewel sommige Duitse diplomaten er alles aan deden om een oorlog te vermijden, lag na het fatale schot van Gavrilo Princip op aartshertog Frans Ferdinand de weg naar een wereldwijd conflict open. Duitsland koos voor de aanval als verdediging. Het was nooit de bedoeling dat de soldaten vier jaar lang in de loopgraven zouden doorbrengen. Het front sneed dwars door 't Hooze, een gehucht van Zillebeke.

Elke bezoeker wordt in Museum Hooze Crater (1) gastvrij ontvangen. Met levensgrote decors, persoonlijke verhalen van soldaten en heel wat foto's en memorabilia krijgt de oorlog op 't Hooze iets tastbaars. Er loopt ook een extra expo over de medische evacuatie aan het front. Knooppunt 73 bevindt zich aan de overkant, op de rechterhoek van de Britse begraafplaats.

73 -> 74 VREEMDE POTTEN

Met tienduizenden marcheerden de Duitse soldaten tussen 1915 en 1917 op de Meenseweg hun nachtmerrrie tegemoet. Ter hoogte van het attractiepark Bellewaarde gaan we rechtsaf. Deze vallei is genoemd naar de Bellewaardebeek. Landbouwers ploegen hier nog regelmatig oorlogstuig boven en metaaldetectoren komen er wat graag hun hobby beoefenen.

DE BARON VAN 'T HOOGE

VZW Bellewaerts organiseert begeleide wandel- en fiets-tochten op 't Hooze in Zillebeke. Ook groepen kunnen een vertelwandeling boeken, zoals die over Gaston de Vinck. De kasteelheer van 't Hooze was een van de eerste bewoners die na de oorlog terugkeerde om de Verwoeste Gewesten herop te bouwen.

www.bellewaerts.be



PRAKTISCH

- Afstand: 10,6 km
- Parking: Langs de kant van de weg ter hoogte van Hooze Crater Museum, Meenseweg 467, Zillebeke (Ieper) – parkeer-schijf leggen (max. 3 uur).
- Bus: Lijn 84 stopt om het uur aan de halte Zillebeke - Bellewaarde
- Wandelnetwerk Ieperboog
- Niet geschikt voor rolstoel of kindervan

Enkel de hoofddreef van het Hogeboos (2) is vrij toegankelijk. Ook hier zien we de rode metalen hekken rond de jonge olmen die de stellingen van de Duitsers aangeven. De blauwe hekken geven de geallieerde stellingen aan. De vreemde potten in de bomen zijn bedoeld om vleermuizen te huisvesten. Het pad kruipt langzaam naar omhoog.

74 -> 40 -> 37 KASTEELDOMEIN

De afsluiting van sommige weiden is recuperatie-materiaal uit de oorlog. Bij het terug afdalen van de heuvelkam gaan we links het Landgoed Godtschalck (3) in. Tot eind 19de eeuw was dit een kasteeldomein. Na de verwoestingen van de Eerste Wereldoorlog werd het heringericht als bos. Sommige parkbomen hebben de oorlog overleefd, zoals de majestueuze beuk die midden op het pad staat. De lus door het bos zit vol verrassingen, zoals de open plek met poel aan de rand van het bos of het verlopen boshuisje midden in het bos. Een vriendelijk koppel schrikt zich een hoedje als we gegeneerd en met rode wangen voorzichtig een begroeting mompelen.

37 -> 41 -> 39 -> 42 -> 43 -> 45 -> 46 -> 71 ICONISCH UITKIJKPUNT

Aan de rand van het Groenenbergbos steekt nog een Duitse bunker deels boven de grond. We stappen langs een weide en draaien dan voorbij de vroegere herberg Het Pappotje linksaf naar Hill 62 (4). Er lopen een tiental Britten rond op het memoriaal. Het uitzicht op Ieper is prachtig. De torens zijn perfect te onderscheiden.

71 -> 72 -> RECHTDOOR NAAR 73 TUNNELERS VERSUS MINEURS

We dwarsen opnieuw de brede vallei van de Bellewaardebeek om dan voorbij de Meenseweg heuvelopwaarts richting Bellewaarde Ridge (5) te stappen. De Cross of Sacrifice staat op het hoogste punt van de heuvel. Twee jaar lang werd hier zowel boven- als ondergronds een dodelijk kat-en-muis-spel gespeeld. Nu eens waren de Britse 'tunnelers' aan de winnende hand, dan weer de Duitse 'mineurs'. Het pad brengt ons langs de bosrand terug naar Museum Hooze Crater waar een Bernardus van 't vat wacht. ■